

Conservation Connections

Welcome to the first issue of Conservation Connections! First, let us introduce ourselves.

Wisconsin's Green Fire (WGF) is a nonprofit organization devoted to supporting the conservation legacy of Wisconsin by promoting science-based management of Wisconsin's natural resources.

Website

WGF's Student and Young Professional (S&YP) Work Group made this newsletter to connect and inform aspiring conservation professionals around the state, across organizations and institutions. We hope you will read on, reach out, and connect with us!



Will Vuyk, S&YP Work Group Chair

Learn more

What's up in Wisconsin

Do you care about nature? Outdoor recreation? A healthy environment for all? Here are just a few of the *many* issues around the state that you should know about, **selected by our S&YP team from local news**:

- [Proposed State Budget](#) applauded by conservationists
- New Waters of the United States rule puts [50% of Wisconsin's wetlands at risk](#)
- Climate change threatens the Mississippi River basin. [Learn about the effort to develop a plan](#)
- Research unveils [hidden overharvest of Wisconsin's inland recreational fisheries](#)
- [Project to clean up the Milwaukee Estuary](#) moves forward



PHENOLOGY HIGHLIGHT: Keep an eye out for spring migrants and ephemerals!

What WGF is Doing

WGF's workgroups are advising the future of Wisconsin conservation policy by tackling these key issues:

- [Conserving Wisconsin's Wolves](#) - WGF has an eye on the future

- We need climate action now. [See here what WGF recommends](#)
- PFAS are everywhere. [Read WGF's recent report on these persistent chemicals](#)
- [WGF weighs in on state energy policy](#)



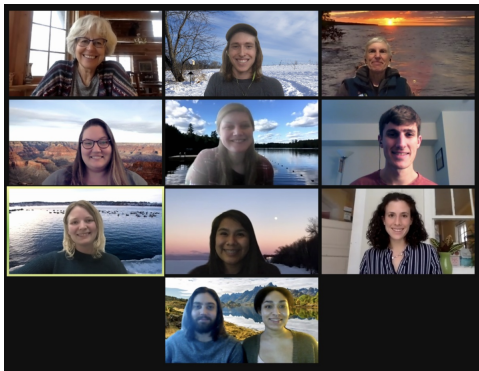
Intrigued?

See more of our work here ->

Our Work

Field Glasses

Spotting good work around the state



WGF's Student and Young Professional Work Group made this newsletter. Ratified just this fall, we are excited to begin branching out to aspiring educators, communicators, researchers, policymakers, and natural resource professionals around Wisconsin. Learn more about us!

The Student and Young Professional Work Group

Deer Conservation in WI
Ronald Reagan High School
Mr. Tilman's B5 class
 This program is partially funded by the USGS Award #133AP0002

Scientific Story
 Date: January 22, 2021

"If the browse line continues to show that all the lower vegetation is gone, the deer could start to die out as well!"

How do wolves affect deer populations?
 "The apex predators are there to also regulate their prey to ensure that the food chain isn't thrown off balance!"

How do deer benefit the ecosystem?
 "If we didn't have predators or hunting season overall, we would have overpopulation of these animals."
 "Deer populations in WI are directly affected by the wolf populations. Many people want to start an open wolf hunting season soon. Some people think we need to update the WI wolf conservation plan first."

Food Web
 "That currency was a great tool to study deer."
 "maybe population control of the vegetation the eat, so they don't overgrow."
 "providing energy for predators!"

For more information, contact [Justin Hougham](mailto:Justin.Hougham@wisconsin.edu), or check out our website: <https://u.wisc.edu/extension/conservationeducation/>

Upham Woods Outdoor Learning Center in the Wisconsin Dells has been using virtual programming to meet with students and conduct experiments, dig into conservation issues, and explore the natural world. Upham has partnered with Wisconsin Green Fire to share environmental career pathways with students and explore the Wolf Hunt debate with high school students. [Learn more about the Upham Woods Research Accelerator program here.](#)

Upham Woods Outdoor Learning Center

S&YP Shout-out

Kate McGinn, a WGF member and PhD student at UW Madison, was selected for an National Science Foundation Graduate Research Fellowship to support her bioacoustics research of California spotted owls. Read more about Kate's amazing research [here](#), and more about NSF research fellowships [here](#).



Does your organization want to be featured in *Field Glasses*? Let us know!

Resources

- [Wisconsin Ecology Undergraduate Job Board](#)
 - [Texas A&M Wildlife Job Board](#)
 - [The Student Conservation Association](#)
 - [Conservation Paleobiology Network](#)
 - [ECOLOG-L](#) (The Ecological Society of America)
 - [Government Jobs in Bayfield County](#)
-

Job Opportunity: [WGF Membership and Development Coordinator - Part Time](#)

Questions or concerns? Want to get involved? Please don't hesitate to reach out!

Wisconsin's Green Fire Student and Young Professional
Workgroup
syp.workgroup@gmail.com | www.wigreenfire.org

Contact us!

